

# THE CRITICAL ROLE OF ROAD INFRASTRUCTURE IN THE CONNECTED ERA

Tal Kreisler, CEO  
NoTraffic





# THE ROAD TO “AUTONOMOUS”

---

**Fully  
Autonomous  
Era**

**~20 years**

## **Transition Phase**

- **Connected vehicles**
- **Semi autonomous vehicles**
- **Non connected vehicles**
- **Pedestrians**

# KEY DIFFERENTIATORS

---



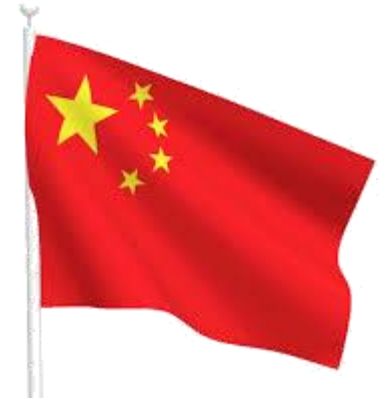
**Phase 1**  
**Connectivity**  
**(Basic Safety Message)**

**Phase 2**  
**Automated vehicle**



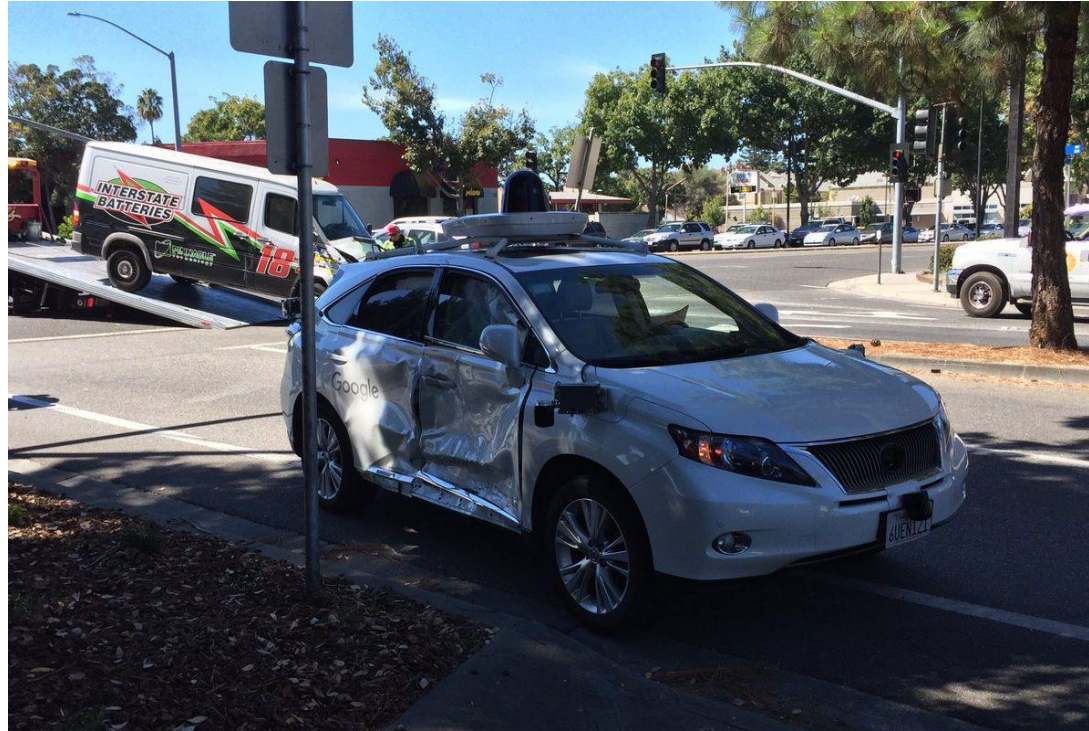
# TECHNOLOGY IS NOT THE SOURCE OF DELAY

---



# SAFER ROADS WITH AVs?

---

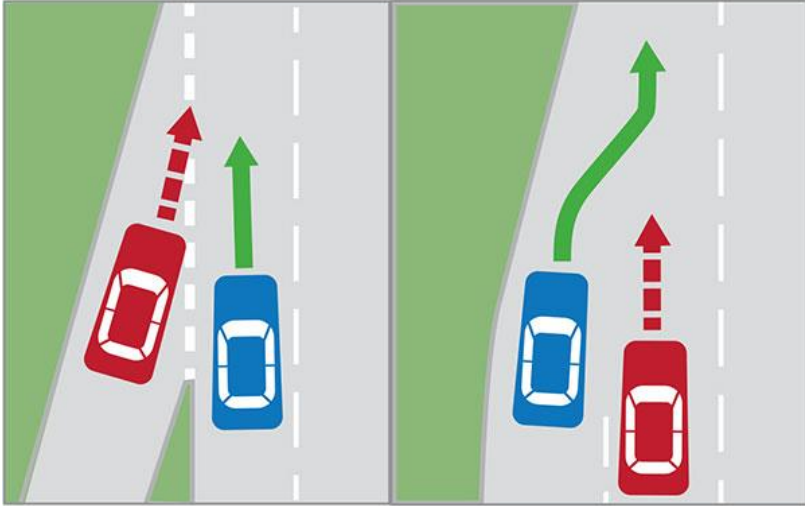


58 of 66 (88%) AV crashes  
reported to the California Department of Motor Vehicles  
**occurred in intersections**



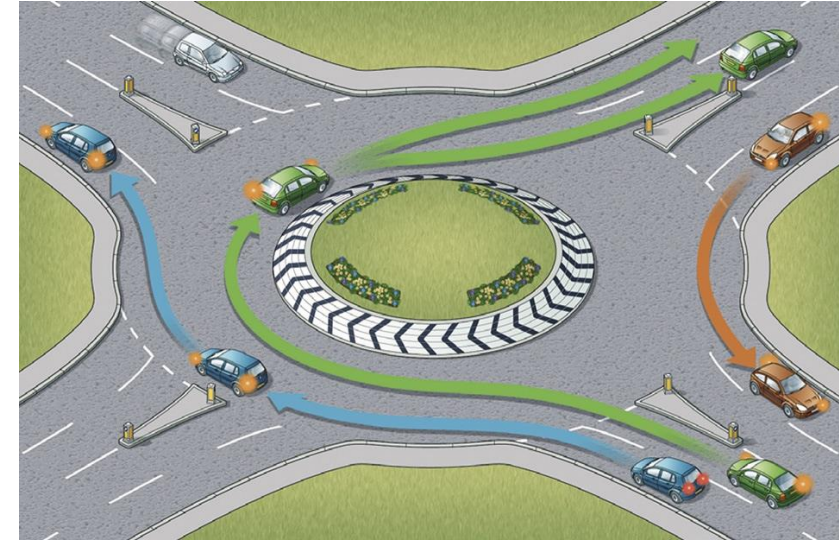
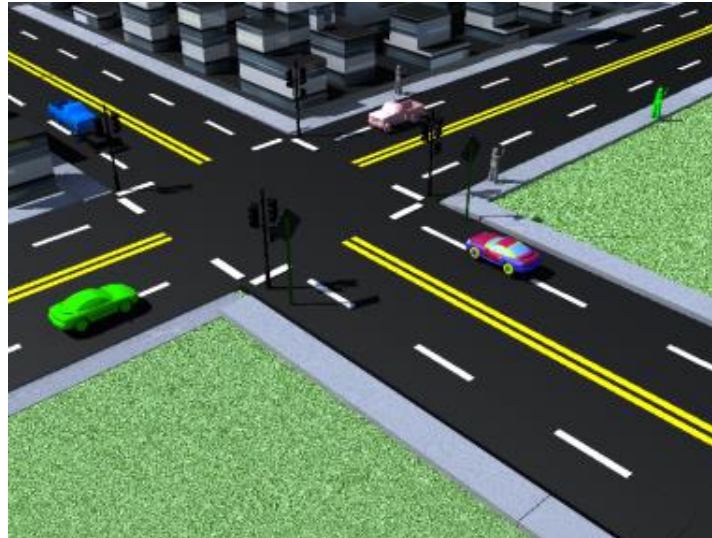
# CONFLICT POINTS CHALLENGE

---



Merging lanes

Intersections



Roundabouts

# EFFICIENT ROADS WITH AVs?

---

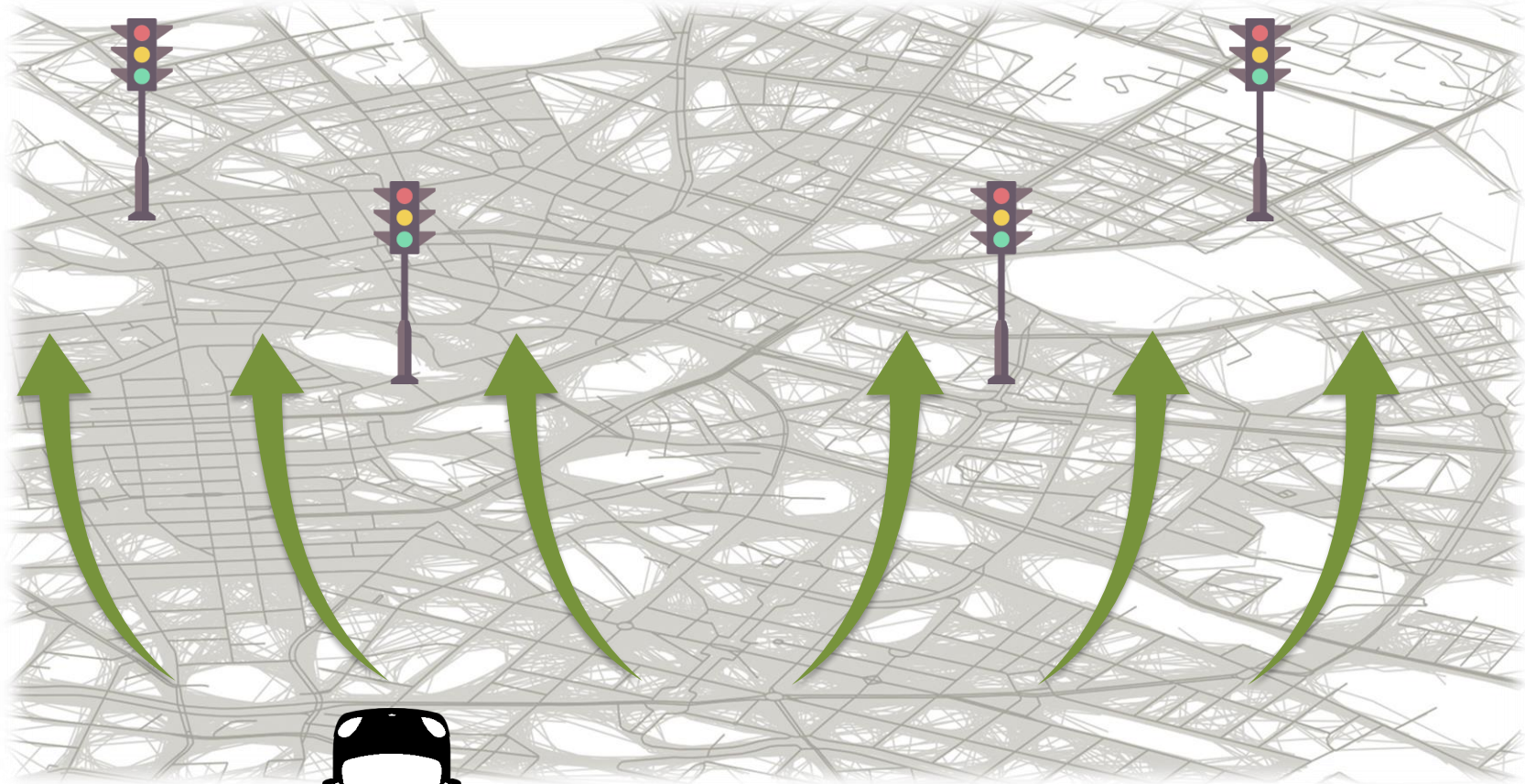


Expect massive gridlocks



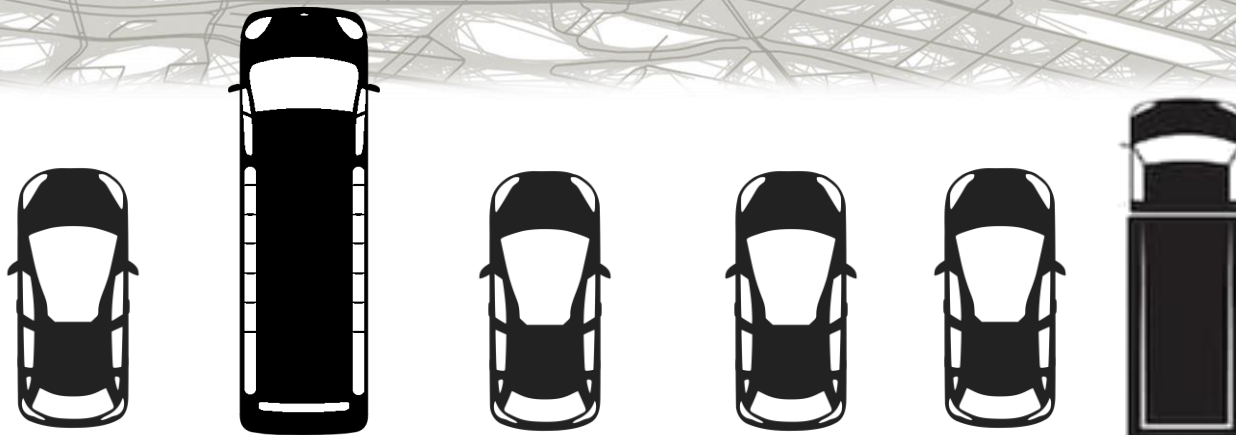
# PROACTIVE OPTIMIZATION

SUPPLY



DEMAND

- Waze
- Google
- Fleet operators





# OEMS ARE PUSHING V2I DEVELOPMENT

---

## Audi Launches First Vehicle-to-Infrastructure (V2I) Technology in the U.S. Starting in Las Vegas

- Audi is the first manufacturer to launch V2I technology in the U.S. in select 2017 Audi A4, Q7 and allroad® models in Las Vegas



## GM, Michigan look ahead with V2I technology development



**IoT**news

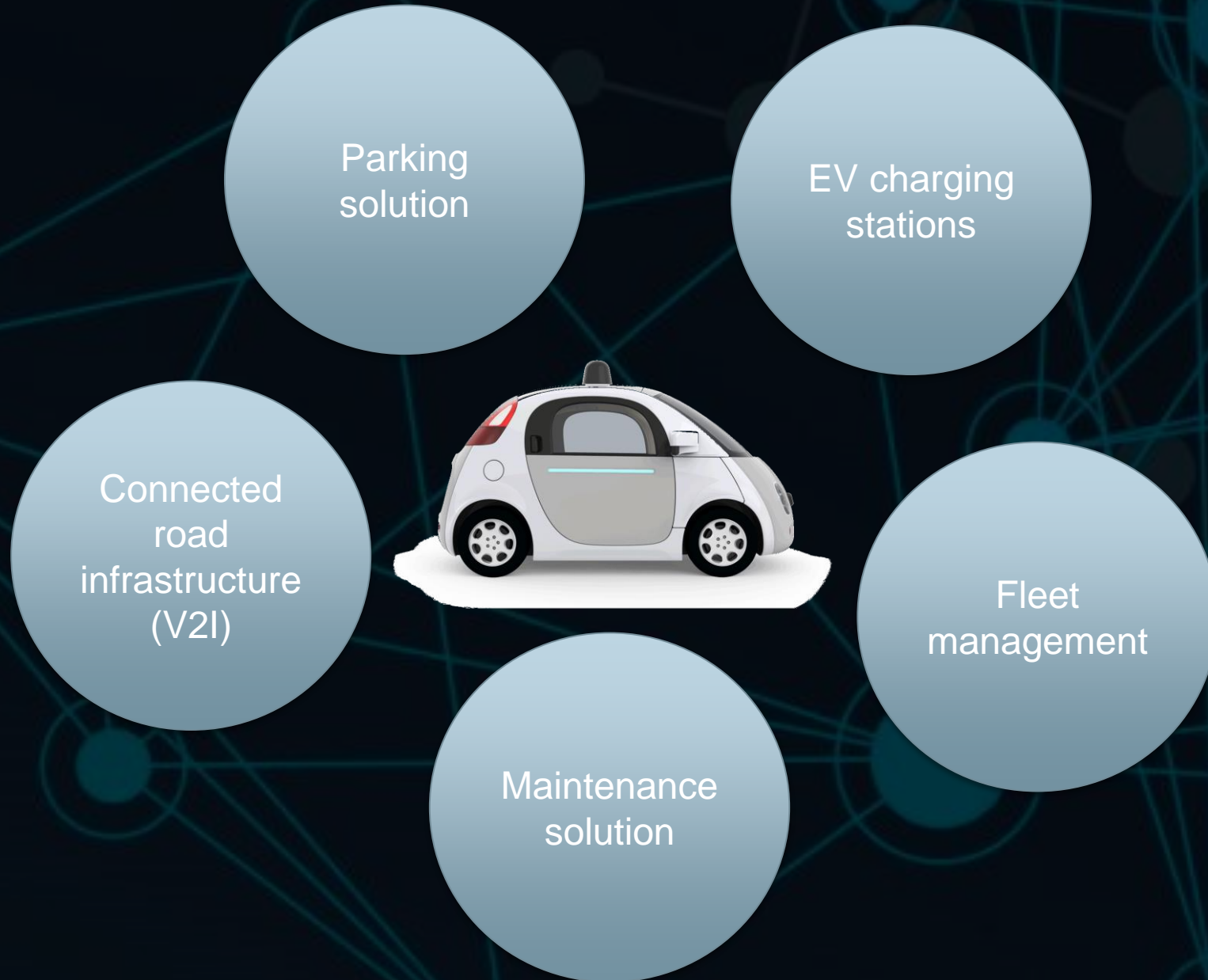
Honda demonstrates 'smart intersection' technology



**HONDA**

# AN ECOSYSTEM GAME

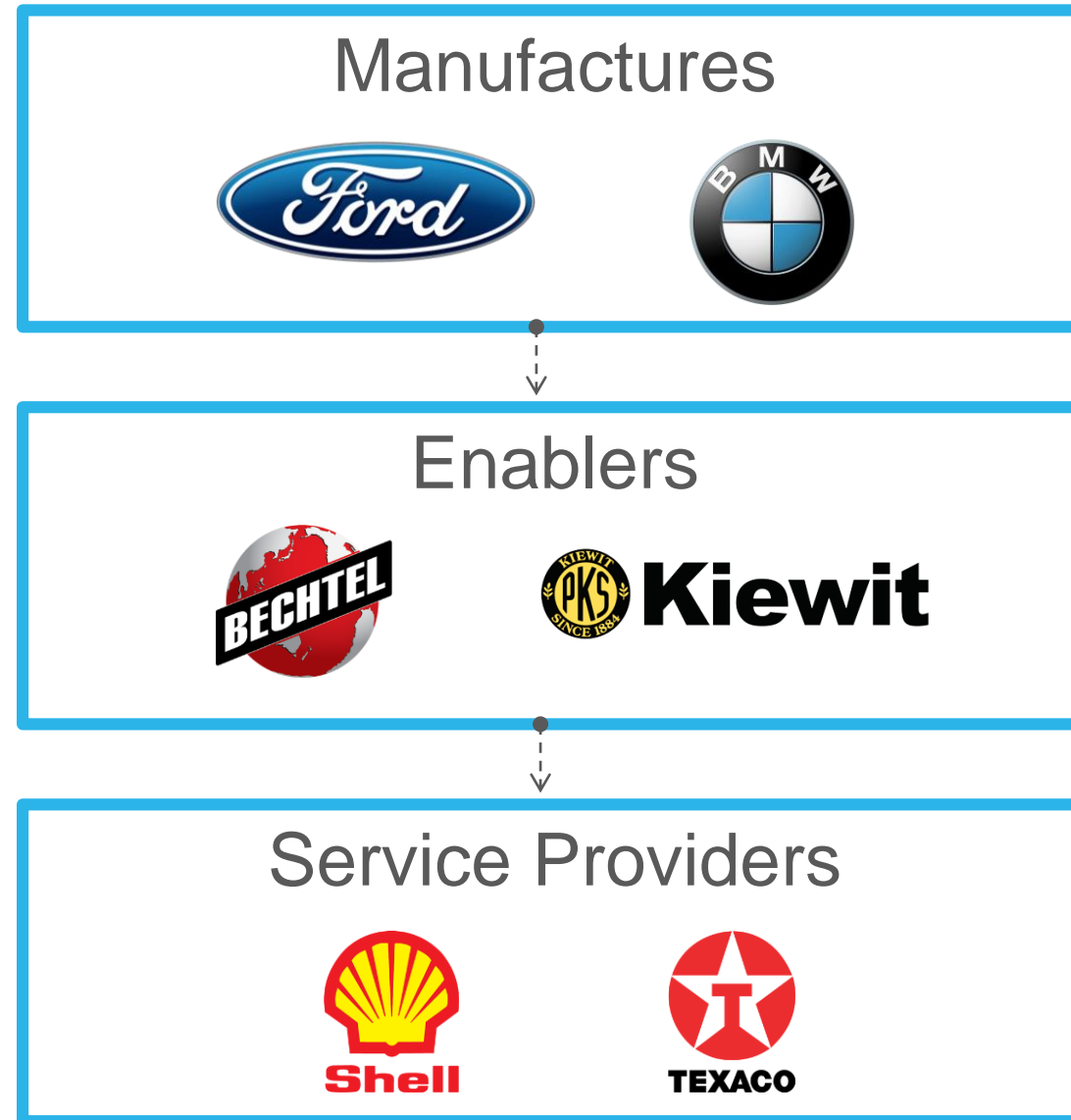
---



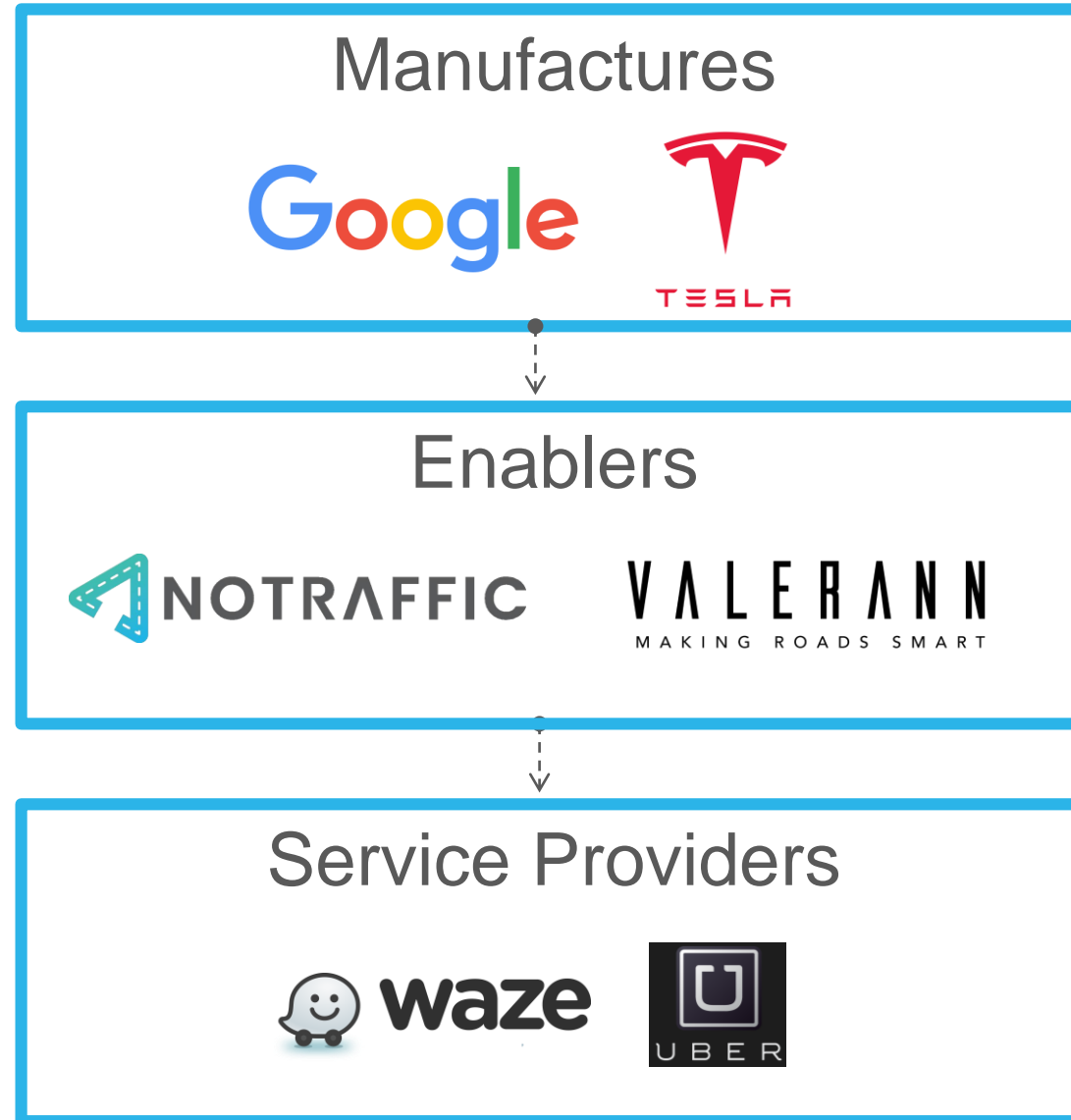


# TRADITIONAL ECO-SYSTEM

---



# “CONNECTED” ECO-SYSTEM





**“Real time adaptive systems, have been deployed on less than 1% of existing traffic signals”**

**USDOT**

**1960s**

**Today**

**1900s**





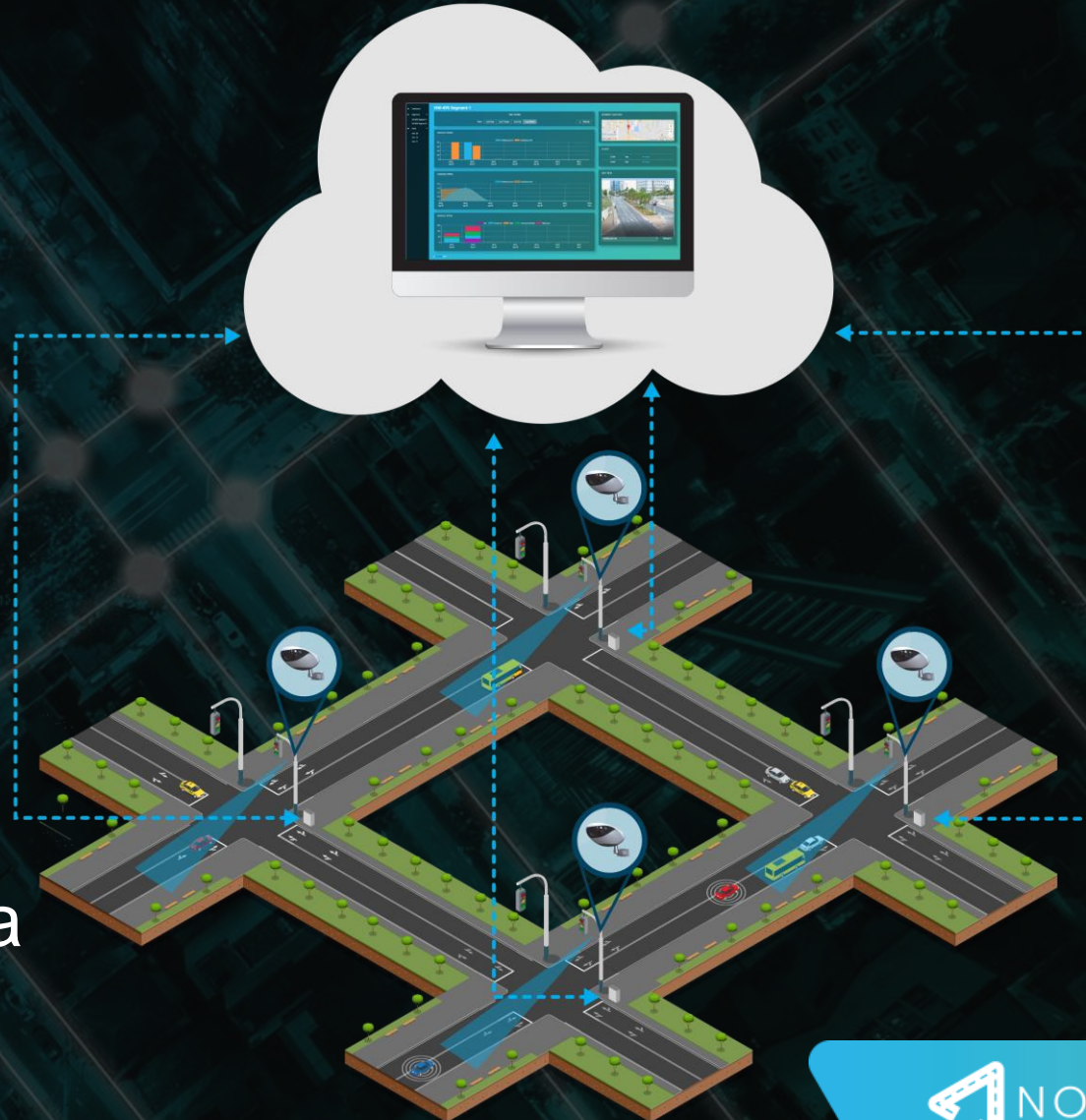
A futuristic city street at night, illuminated by blue and red light trails. The background features a complex grid of blue lines and a red line, suggesting a digital or data-driven environment. The text is centered in the upper half of the image.

**NoTraffic** is  
A turnkey traffic management platform,  
which solves today's traffic challenges  
while preparing the roads for the connected era



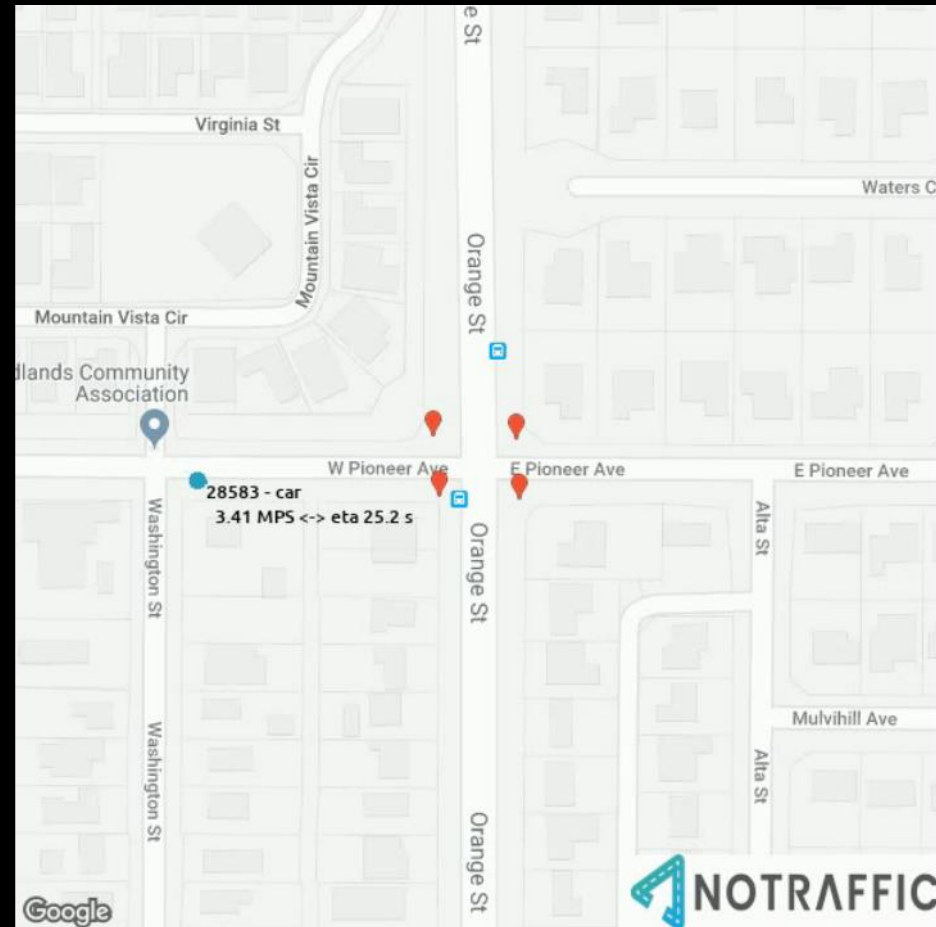
# AI ADAPTIVE TRAFFIC MANAGEMENT PLATFORM

- Edge computing sensors collect data
- ↓
- Data streams to the cloud in real time
- ↓
- AI algorithms optimize city grid layouts
- ↓
- User deploys traffic policy via cloud-based Traffic Management Center



# SENSORS COLLECT & DISTRIBUTE ARTIFICIAL BSM DATA

---





# V2X EXPERIMENT – JUNE 2018



# Exciting Times Ahead

JOIN  
OUR TEAM

Tal@NoTraffic.tech  
054-7652790

